

Lawton Fort Sill Weekly Calendar



Monday, September 16

Mystery Beer Monday

11 AM | BackPorch DraftHouse-West Lawton

Monday Madness

4 PM | Urban Air Adventure Park

Flowers in Vases Pottery Painting Event

6 PM | A Pigment of Your Imagination

Inspire Lawton's 5k Walk/Run Training by Rita!

7 PM | Elmer Thomas Park

Tuesday, September 17

Armed Services Y Fry

11 AM/ 4 PM | Great Plains Coliseum

Table Games Training Days

2 PM/8 PM | Comanche Nation Casino

Wednesday, September 18

Genealogy Research Group

2 PM | Lawton Public Library

Thursday, September 19

Thursday Morning Walking Club

9 AM | Wildlife Refuge Visitor Center

2019 Part Time Job Fair

9 AM | Great Plains Technology Center

Making The Connection Opening Reception

1 PM | Comanche National Museum

Table Games Training Days

2 PM/8 PM | Comanche Nation Casino

Family Night

4 PM | Urban Air Adventure Park

Business After Hours

5:30 PM | Central Mall in "The Outpost"

Friday, September 20

LPS Foundation-Golden Corral Breakfast

6 AM | Golden Corral

Jumperoo

10 AM | Urban Air Adventure Park

Indian Taco Sale

11 AM | TSA Boys & Girls Club

Autosound Competition International Finals

12 PM | Comanche County Fairgrounds

Right Arm Night

4 PM | Fort Sill Patriot Club

2nd Annual YPL Night Golf

4:45 PM | Lawton Municipal Golf Course

Ticket prices are \$30 for members and mentors, and \$50 for non-members.

Saturday, September 21

Inspire Lawton's Slay a 5k Walk or Run Training

7 AM | Lawton Central Mall

Lawton Farmers Market

8 AM | Comanche County Fairgrounds

Family Saturday Morning Hikes

9 AM | Wildlife Refuge Visitor Center

The Barn Flea Market

9 AM | Highway 49

Located off the medicine park exit on highway 49.

Project Jelly Roll

10:30 AM | Quilt N Bee

National Sew A Jelly Roll Day

Skate with 580RG

12 PM | Laugh Out Loud

Autosound Competition International Finals

12 PM | Comanche County Fairgrounds

Crochet with Katie

1 PM | The Salt Cellar

Sunday, September 22

The Barn Flea Market

9 AM | Highway 49

Autosound Competition International Finals

12 PM | Comanche County Fairgrounds

Macramé Workshop! Plant hanger

2 PM | Past Perfect Too

For more information on events and attractions, visit

LawtonCalendar.com

See What We See!

LAWTON • FORT SILL
CONVENTION & VISITORS BUREAU
VISITLAWTONOK.COM



Fort Sill

Fort Sill is home to many sights and historical attractions: Fort Sill National Historic Landmark & Museum, Geronimo's Grave, Lake Elmer Thomas Recreation Area (LETRA) and Medicine Bluffs. For more information on Fort Sill, please call (580) 442-4500 or visit sill-www.army.mil/Museum/FSNHLM.



Museum of the Great Plains

This museum features interactive history exhibits, The Tornado Theater and Upper Floor Explore. To contact the Museum of the Great Plains, please call (580) 581-3460 or visit discovermgp.org.



Wichita Mountain Wildlife Refuge

The Wichita Mountains Wildlife Refuge is a 59,020 acre refuge which provides habitat for animals such as American bison, Texas longhorn cattle. For more information on the Wildlife Refuge, please call (580) 442-4500 or visit fws.gov/refuge/Wichita_Mountains.



Historic Mattie Beal Home

In the land lottery of 1901 the second name drawn was Martha "Mattie" Helen Beal. For more information on the Mattie Beal Homesites, please call (580) 678-3156 or visit lawtonheritage.org.



Comanche National Museum & Cultural Center

Exhibits that deepen the understanding and appreciation of Comanche history, culture and fine art. To contact the Comanche National Museum, please call (580) 353-0404 or visit comanchemuseum.com.



Holy City of the Wichitas

Located in the Wildlife Refuge, this 66-acre area is home to North America's longest continuously running Easter Pageant, "The Prince of Peace." For more information, please call (580) 429-3361 or visit holycityofthewichitas.com.

Lawton Fort Sill Casinos

Apache Casino Hotel

2315 E Gore Blvd
580-248-5905-apachecasinohotel.com.

Comanche Nation Casino

402 SE Interstate Dr
580-250-3030-comanchenationcasinos.com

Comanche Red River Casino

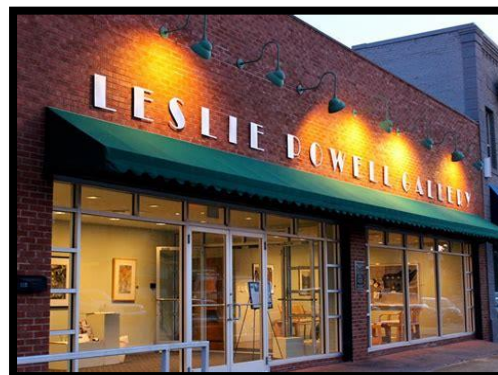
196747 HWY 36
580-250-3060-comancheredrivercasino.com

Comanche Spur Casino

9047 US Hwy 62
580-250-3090-comanchespur.com

Kiowa Casino

198131 Hwy 36
580-299-3333-KiowaCasino.com



Leslie Powell Art Gallery

A nonprofit gallery devoted to supporting local artists. To contact the Leslie Powell Art Gallery, please call (580) 357-9526 or visit lpgallery.org.



Medicine Park

Al Capone, Bonnie and Clyde, Roy Rogers and countless others contribute to the colorful flavor of Medicine Park. For more information, visit medicinepark.com.